



Extruded R4 POM ELS nylon Plastic Material Sheet Rod 60mm

Our Product Introduction

for more products please visit us on makewellplastic.com

Basic Information

- Place of Origin: China
- Brand Name: MAKEWELL
- Certification: ISO9001 Rohs, Reach
- Model Number: POM-C ELS sheet
- Minimum Order Quantity: 10kg
- Price: 40- 60/kg
- Packaging Details: Pallet
- Delivery Time: 7-15 days
- Payment Terms: L/C, D/A, D/P, T/T, Western Union, MoneyGram
- Supply Ability: 100000000 kg /month

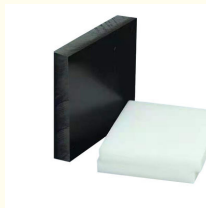


Product Specification

- Material: POM
- Color: Black, White, Custom Color
- Size: 600*1200mm 1000*2000mm Custom Size
- Quality: High Quality
- Delivery Time: 7-15 Days
- Advantage: Good Mechanical Properties And Rigidity
- Surface: High Surface Hardness
- Highlight: Changzhou Makewell POM ELS Rod, Changzhou Makewell POM ELS Sheet, Changzhou Makewell Extruded pom nylon



More Images



Product Description

Product Description

POM-C is a pure-grade pom copolymer material. In addition to natural color and black, there are also a series of colors to choose from; POM-C copolyformaldehyde is more resistant to hydrolysis, strong alkali and thermal oxidation than homopolyformaldehyde.

Our size

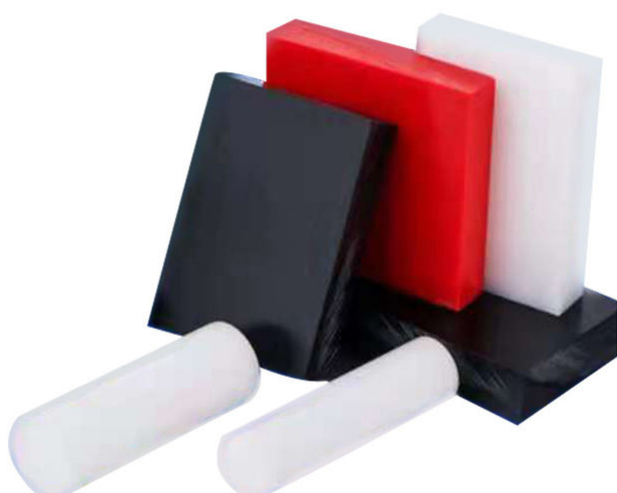
POM ELS (NC、BK)

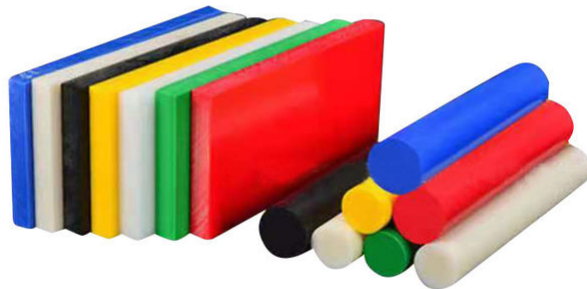
Product	Diameter (mm)	Width (mm)	Length (mm)	Mark
POM ELS rod	15-100	—	1000	Diameter 5mm/step
POM ELS rod	110-250	—	1000	Diameter 10mm/step
Product	Thickness (mm)	Width (mm)	Length (mm)	Mark
POM ESD plate	8-12	620	1250	Thickness 2mm/step
POM ESD plate	10-60	620	1250	Thickness 5mm/step
POM ESD plate	70-100	620	1250	Thickness 10mm/step

Detailed Photos

Our Product Introduction

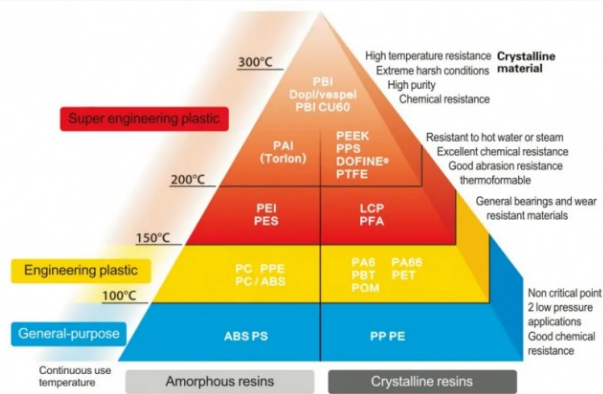
for more products please visit us on makewellplastic.com





Company Profile

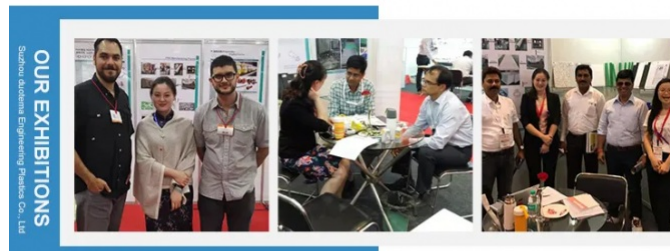




APPLICATION



TRADE SHOWS



CERTIFICATION



FAQ

- A: Are you factory or Trade Company?
 B: We are professional manufacturer with about 10+ years experience. We can export you the products directly.
- A: Where is your factory located?
 B: Our factory is located in Changxing City, Zhejiang Province, welcomed to visit our company!
- A: Can I get some samples?
 B: Yes, we offer free samples. Customers just need to pay for the freight.
- A: Do you provide OEM service?
 B: Yes, OEM service is available. We have professional design department, which allows us to produce according to your requirements.
- A: What certificates have you got?
 B: Our products get ROHS, and REACH.

A: What is the mass production lead time?

B: Normally 10-20 days after deposit. Bulk order depends on the quantity.

A: How to protect our rights after payment?

B: Don't worry, we accept Alibaba Trade Assurance, which can help to 100% protect the quality, on-time shipment, and payment.

A: How does your factory do regarding quality control?

B: We always attach great importance to quality control from the beginning to the end:

- 1) All raw material we used are environmental-friendly;
- 2) Skilful workers care every detail in handling the producing and packing process.
- 3) Quality control department especially responsible for quality checking in each process.

MakeWell Changzhou Makewell Industry Co., Ltd

+86-18626201100

info@makewellcz.com

makewellplastic.com

Gounan Industrial Park Wujin District Changzhou City, Jiangsu, China