



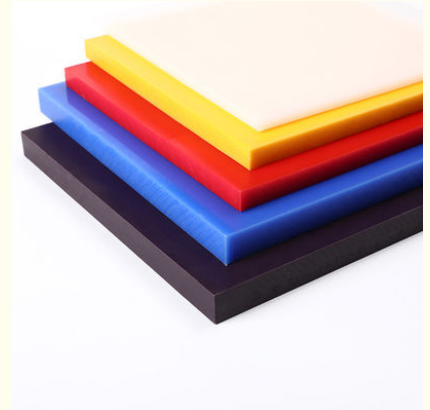
## Black White PE UHMW Material Sheet CNC Machining

Our Product Introduction

for more products please visit us on makewellplastic.com

### Basic Information

- Place of Origin: China
- Brand Name: MAKEWELL
- Certification: ISO9001 Rohs, Reach
- Model Number: UPE SHEET
- Minimum Order Quantity: 10kg
- Price: 40- 60/kg
- Packaging Details: Pallet
- Delivery Time: 7-15 days
- Payment Terms: L/C, D/A, D/P, T/T, Western Union, MoneyGram
- Supply Ability: 100000000 kg /month

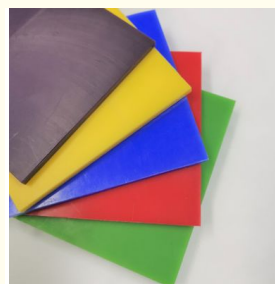
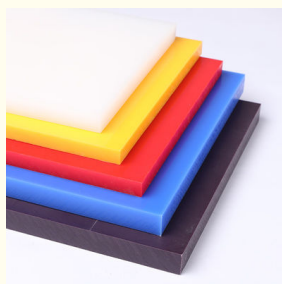


### Product Specification

- Material: SHEET
- Color: Black, White, Custom Color
- Size: 1 2 3 4 5 6-200mm
- Quality: High Quality
- Delivery Time: 7-15 Days
- Advantage: Good Mechanical Properties And Rigidity
- Surface: High Surface Hardness
- Plastic Modling Type: Extruding,Mould
- Type: Sheet, Rod, Tube
- Packing: Wooden Box,Wooden Case
- Tolerance: As Drawing
- Service: OEM/ODM As Your Sketch,idea Or Samples,OEM Service
- Item: Custom Cnc Machining Engineering Plastic Products
- Product Name: Upe Sheet Plate/rod/tube



### More Images



## Product Description

### Product Description

UPE Natural Color "White", Green, Black, Color - available as "Food grade") With excellent balance performance, excellent friction and wear resistance, can reach -200 excellent low temperature and low pressure impact strength.

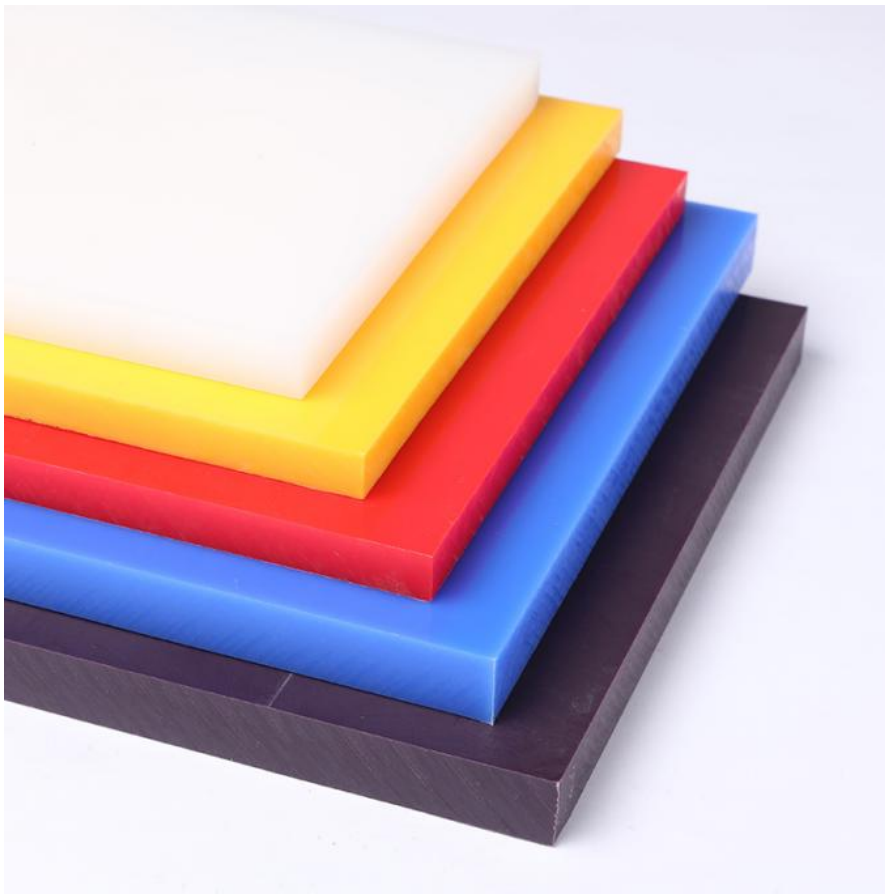
### Our size

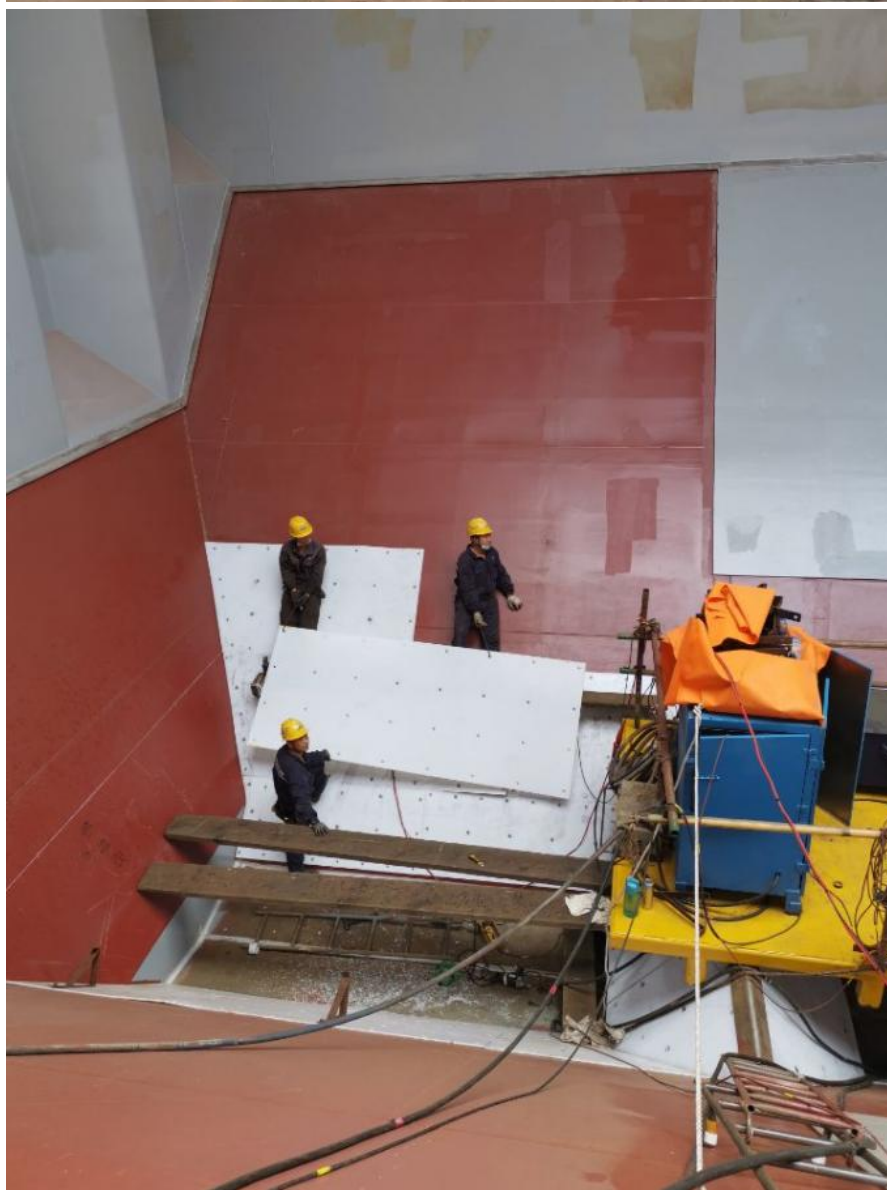
#### UHMW PE 300/500/1000 (NC、BK、Red、Blue、Green、Yellow、Pourpre、Customer color)

Product	Diameter (mm)	Width (mm)	Length (mm)	Mark
UHMW PE rod	20-50	—	1000/3000	Diameter 5mm/step
UHMW PE rod	60	—	1000/3000	
UHMW PE rod	70	—	1000/3000	
UHMW PE rod	80-150	—	1000	Diameter 10mm/step
Product	Thickness (mm)	Width (mm)	Length (mm)	Mark
UHMW PE sheet	10	Size (Width and Length) : 1060*4180mm 1510*4150mm 1040*6050mm 1280*6150mm 1550*5150mm		
UHMW PE sheet	12			
UHMW PE sheet	15-50			Thickness 5mm/step
UHMW PE sheet	50-200			Thickness 10mm/step

### Detailed Photos



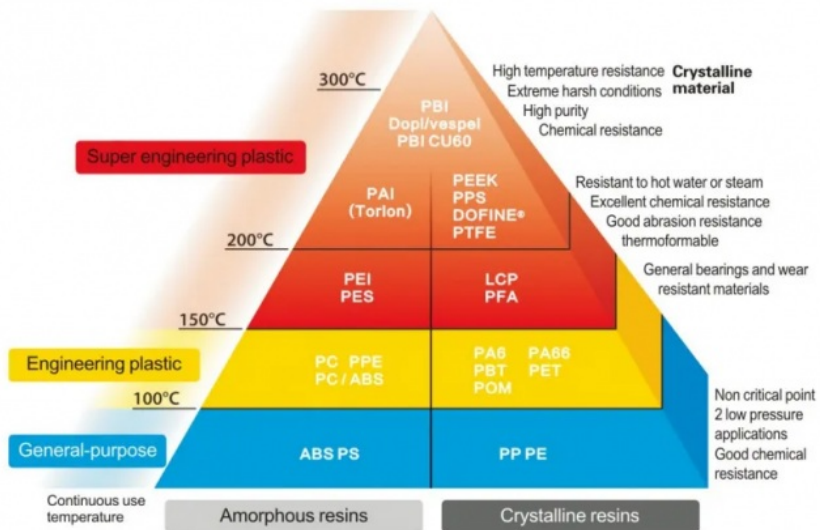








**Company Profile**



# APPLICATION



Food Processing



Food Packaging



Filling Machinery



Transport Equipment



Mechanical Parts



Electronics industry



Robot Industry



Medical Instruments



Glass Machinery



Chemical Equipment



Aircraft Accessories

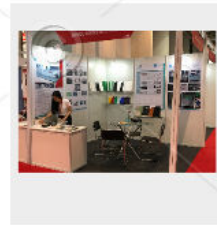
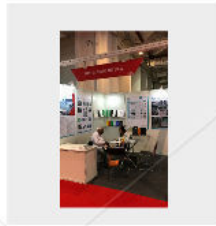
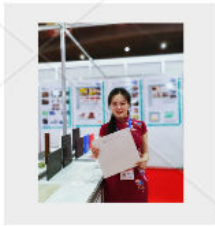
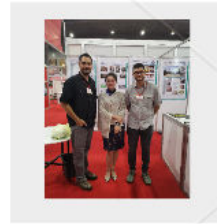


Ship Manufacturing

## Our Exhibition







## FAQ

A: Are you factory or Trade Company?

B: We are professional manufacturer with about 10+ years experience. We can export you the products directly.

A: Where is your factory located?

B: Our factory is located in Changxing City, Zhejiang Province, welcomed to visit our company!

A: Can I get some samples?

B: Yes, we offer free samples. Customers just need to pay for the freight.

A: Do you provide OEM service?

B: Yes, OEM service is available. We have professional design department, which allows us to produce according to your requirements.

A: What certificates have you got?

B: Our products get ROHS, and REACH.

A: What is the mass production lead time?

B: Normally 10-20 days after deposit. Bulk order depends on the quantity.

A: How to protect our rights after payment?

B: Don't worry, we accept Alibaba Trade Assurance, which can help to 100% protect the quality, on-time shipment, and payment.

A: How does your factory do regarding quality control?

B: We always attach great importance to quality control from the beginning to the end:

- 1) All raw material we used are environmental-friendly;
- 2) Skilful workers care every detail in handling the producing and packing process.
- 3) Quality control department especially responsible for quality checking in each process.

**MakeWell**

**Changzhou Makewell Industry Co., Ltd**



+86-18626201100



info@makewellcz.com



makewellplastic.com

Gounan Industrial Park Wujin District Changzhou City, Jiangsu, China